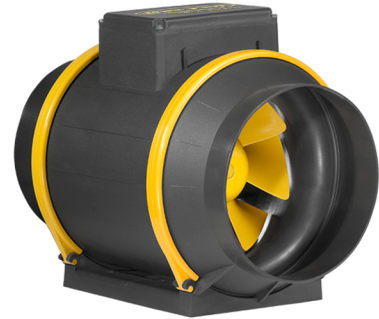
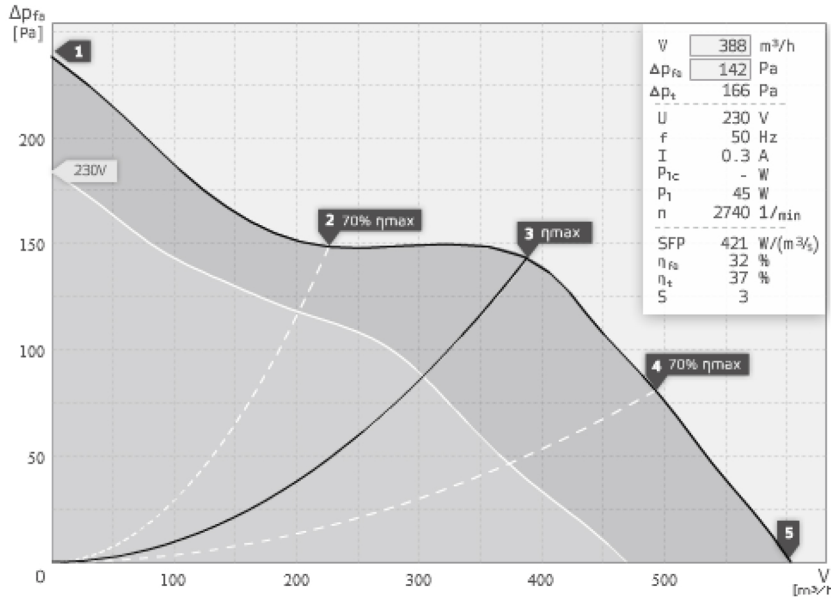




MAX-FAN PRO SERIES

TECHNICAL DATASHEET



- Diagonal impeller with stator
- Plastic housing
- With 2-step switch
- Integrated thermal switch
- Including mounting bracket

| Operating Point | | 1 | 2 | 3 | 4 | 5 |
|---------------------------|-------|------|------|------|------|------|
| Current I | A | 0,3 | 0,3 | 0,3 | 0,3 | 0,3 |
| Power Consumption P1 | W | 40 | 39 | 45 | 46 | 44 |
| RPM n | 1/min | 2802 | 2815 | 2740 | 2737 | 2768 |
| SPL inlet LWA5 | dB(A) | 68 | 68 | 69 | 69 | 70 |
| SPL outlet LWA6 | dB(A) | 66 | 67 | 67 | 68 | 71 |
| SPL casing break out LWA2 | dB(A) | 56 | 56 | 57 | 57 | 58 |

| Sound power (LW) dB(A) | | Medium Frequency Band | | | | | | | | |
|------------------------|------|-----------------------|----|-----|-----|-----|----|----|----|----|
| | | Σ | 63 | 125 | 250 | 500 | 1k | 2k | 4k | 8k |
| Inlet | LWA5 | 68 | 28 | 35 | 55 | 67 | 59 | 58 | 54 | 48 |
| Outlet | LWA6 | 67 | 31 | 35 | 56 | 63 | 62 | 57 | 57 | 51 |
| Casing | LWA2 | 56 | 36 | 30 | 41 | 55 | 49 | 48 | 39 | 28 |

| Max Fan PS 150, 600, 2 speed 126546 | |
|---------------------------------------|----------|
| Voltage UN | 230 V 1~ |
| Current Imax | 0,3 |
| Ambient Temperature tA | 60 °C |
| Medium Temperature tM | 60 °C |
| Speed Control | 2-1 |
| Motor Protection | TAI |
| Isolation Class | F |
| Weight | 2,6 kg |

