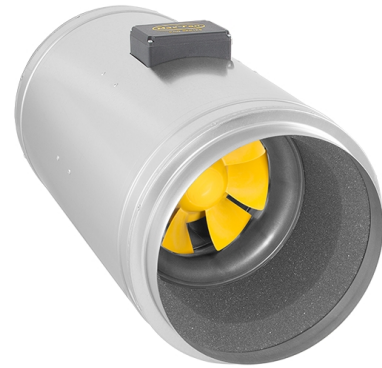
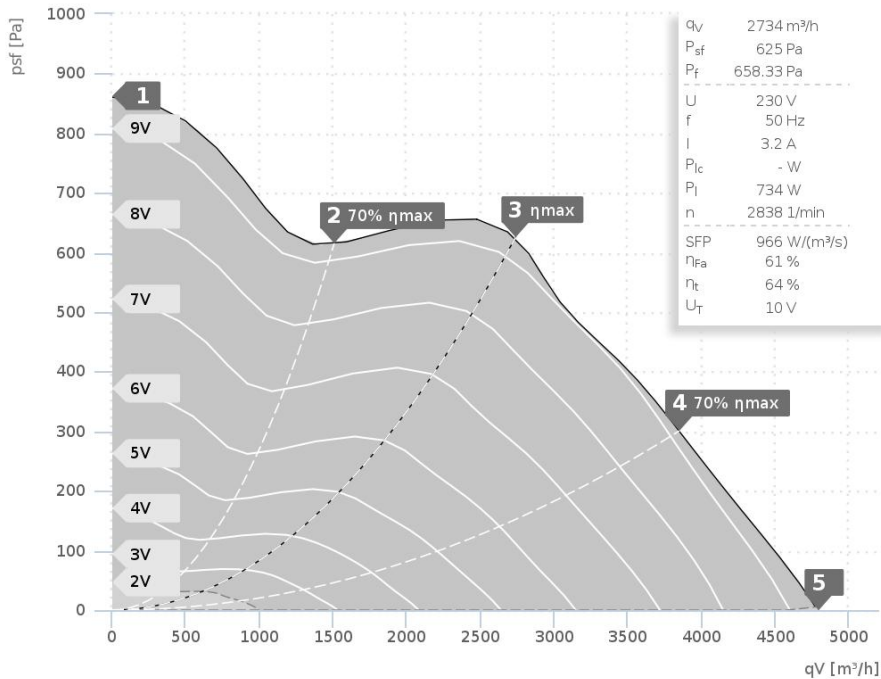


TECHNICAL DATASHEET Q MAX EC 355 / 4800



- Diagonal impeller with stator
- EC motor
- Integrated electronic
- Variable speed control
- Sound insulated
- Galvanized sheet steel housing

Operating Point		1	2	3	4	5
Current I	A	2,8	2,6	3,2	3,1	3,1
Power consumption P ₁	W	636	584	736	714	719
RPM n	1/min	2998	2998	2840	2827	2970
SPL inlet L _{WA5}	dB(A)	82	79	78	78	81
SPL outlet L _{WA6}	dB(A)	82	80	80	80	82
SPL casing break out L _{WA2}	dB(A)	69	68	65	62	66

Sound power (L _W) dB(A)		Medium Frequency Band								
		Σ	63	125	250	500	1k	2k	4k	8k
Inlet	L _{WA5}	78	49	69	72	72	66	70	65	56
Outlet	L _{WA6}	80	55	68	75	74	67	69	61	52
Casing	L _{WA2}	65	52	57	57	58	56	52	50	35

YCAN-EMIX355EC20 150288	
Voltage U _N	230 V 1~
Current I _{max}	3,3 A
Ambient temperature t _A	40 °C
Medium temperatures t _M	40 °C
Speed Control	0-10V
Motor Protection	TEC
Isolation Class	F
Weight	22,0 kg

